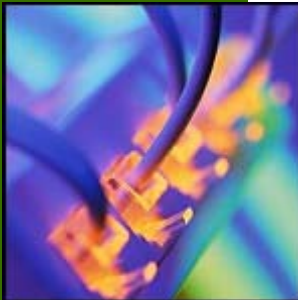


Green Living Technology



Average Home



Online Support



Saving Money

HomeZone

The Green Living Technology rButler communicates to the users rHome products via the GLT HomeZone. The HomeZone is a base unit that connects directly to the homes existing broadband Internet service. HomeZone will then communicate wirelessly to energy saving control devices throughout the home. Eliminating custom installation and expensive wiring.

The GLT HomeZone becomes the users online access into the world of smart home technology. HomeZone information access opens up the potential to seamlessly conserve energy and provide a more affordable future.

- Monitors current time, date and local weather conditions
- No need to adjust for changes in daylight savings time
- Not effected by power outage
- Intelligent as well as programmable
- Modifies energy usage based on several key conditions
- Easy real time temporary condition adjustments
- Adapts to the simple residential home lifestyle
- Online support that helps with setup and operation



Smart Home Energy Management